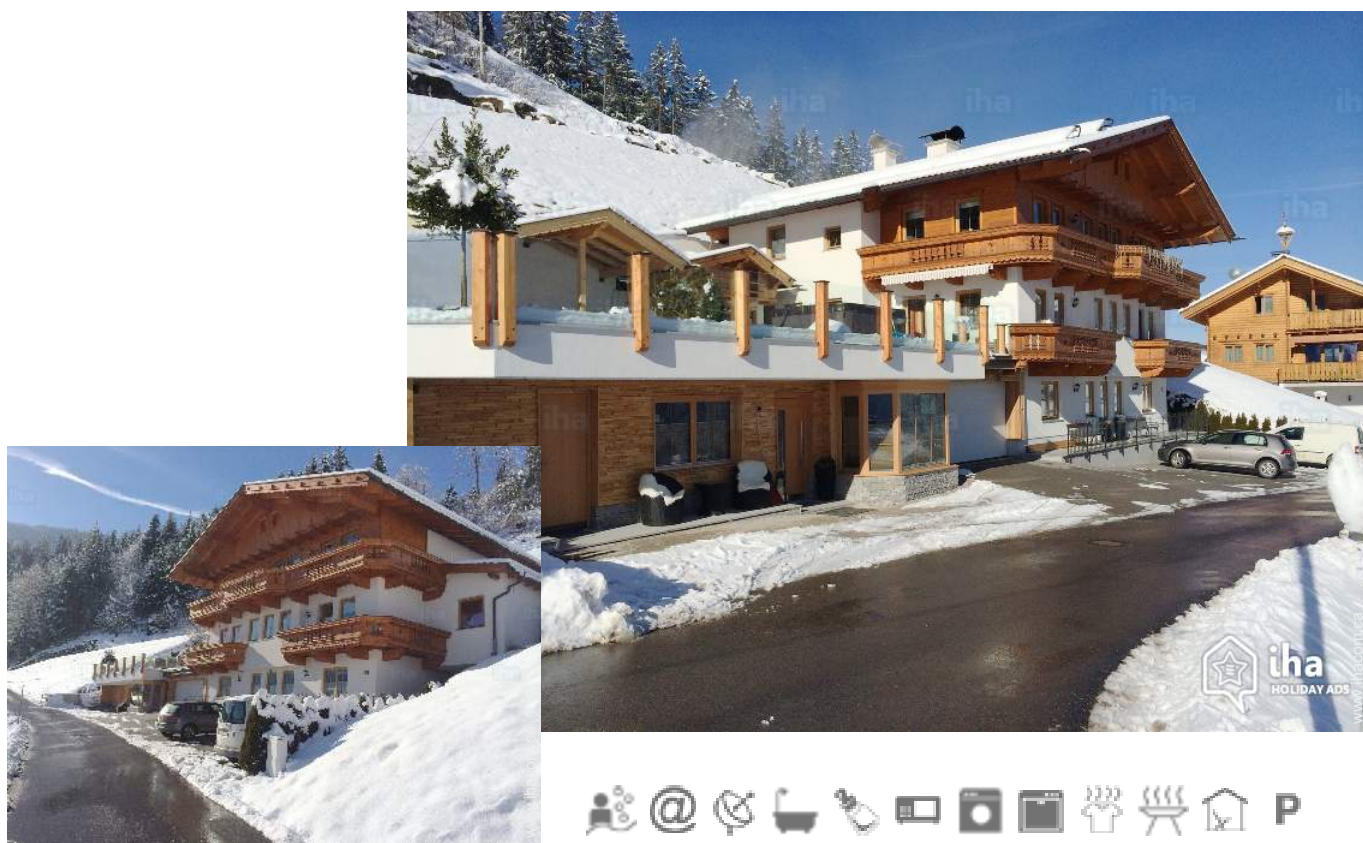


Vacation rental

Aschau im Zillertal

"Landhaus Rieder Apart Arenablick"

House with sauna in the middle of the most beautiful skiing and hiking areas in the Zillertal. Directly at the ski slope snow from the Hochzillertal/Hochfügen ski area.



Country House, detached, single storey, separate entrance, in(on) a(an) Private property

Setting : country setting, ski to door

Capacity : from 2 to 6 person(s)

Bedroom(s) : 2

Room(s) : 2

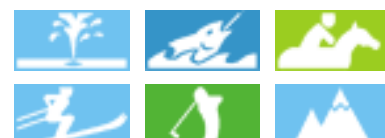
Aschau im Zillertal - Tyrol

Austria

Advert No. 11703

Reservation : +43 (0) 650 7002727 (Austria)

www.ihacom.ca



Vacation rental Aschau im Zillertal - Austria "Landhaus Rieder Apart Arenablick"

2

[Book now](#)

Vacation rental



Country House, detached, single storey, separate entrance, in(on) a(an) Private property

- **Ideal for all age groups, sporty types**
- **View :** panoramic, unobscured, mountain, country side, village, nightlights
- **Setting :** country setting, ski to door
- **Exposure :** South

" Welcome to the beautiful vacation rentals in Aschau im Zillertal! Immerse in the idyll of the Zillertal Alps and enjoy in Aschau a holiday with breathtaking views over the Zillertal, the Hochzillertal - Hochfügen ski area and the Zillertal Arena. The country house has 2 modern apartments, which offers plenty of space for up to 7 people with 68m² and 75m². The first apartment offers 1 double room, 1 triple room and a living room with pull-out sofa. The modern bathroom with shower, bathtub and separate toilet ensures complete comfort. A comfortably designed seating area in the fully equipped kitchen invites after cooking to pleasant evenings with family and friends. The second apartment has 2 bedrooms with double bed and high bed of fine pine wood. The living room that can be separated with a sliding glass door is equipped with a comfortable sofa bed for 2 persons and serves during the day as a cosy space for relaxation and tranquility. Two new and modern bathrooms with shower and WC and fully equipped kitchenettes with comfortable seating provide further comfort. In each apartment you use of course free Wi-Fi and satellite TV. "

Assets

- **Parking :**
Parking uncovered : 3 off road.
- **Advantages :**
Ski locker, ski boot warmer, sauna
- **baby equipment :**
High chair

Surroundings & location



" The country house shines through his unbeatable proximity to the ski slopes in the winter. Start and return directly from your apartment on the downhill run in the ski resort Hochzillertal - Hochfügen. The Zillertal arena is with a 10-minute drive also in close proximity. You can start a romantic winter hike directly from the house by the snow-covered Winter Wonderland in Zillertal. In the summer is your apartment thanks to its proximity to the Zillertal high road the ideal starting point for various activities. Discover exciting routes for hiking or biking with your bike or mountain bike. A day of fun with your family is Freizeitpark Auenfeld amusement park or in the Badewelt Stumm, both only 10 minutes by car. For adults and children, the summer toboggan run Arena Coaster is a special experience in Zell. "

Leisure

- **Leisure activities less than 12 miles :**

Alpine skiing, cross-country skiing, ski-trekking, snowboarding, luge (run), ice-skating, bathing, canyoning, rafting, golf, tennis, squash, riding school, coastal/forest paths, hiking, rappel, mountain bike (path), paragliding, horse-drawn carriage, horse trekking, mini-golf, rollerblade/rollerskate (circuit), ten-pin bowling, volleyball, hunting, big game hunting, fishing, fishing

- **Supervised :**

Ski school, kids ski area, riding school

- **Attractions and relaxation :**

Bar/pub, discotheque, restaurant, movie theater, leisure park, casino, natural spring baths, thermal baths, sauna, health spa, fitness center

Surroundings

- **Locality :**

Ski slopes <50m
Ski lifts 5km
Ice skating rink 5km
Heated swimming pool 5km
Public swimming pool 5km
Public tennis court 5km
9 hole golf course 40km
18 hole golf course 7,5km
Lake 15km
Forest 100m

- **Amenities :**

Village center 2km
Bus stop / bus station <50m
Ski bus pick up point <50m

Bike/mountain bike hire 2km
Car rental 4km
Ski hire store 2km
Breadstore 2km
Local stores 2km
Supermarket 2km
High class retailers 7,5km
Hairdressing salon 2km
Internet cafe 5km
Mail office 2km
Bank 2km
ATM 2km
Drugstore 5km
Doctor 2km
Nurse 30km
Hospital 30km
Dispensary 5km



Summer



Winter

Advert No. 11703

www.ihacom.ca





separate kitchen

Interior

- **Receive up to :**

from 2 to 6 person(s) (6 adults)

- **Liveable floor area :**

70m²

- **Interior layout :**

2 Room(s), 2 bedroom(s), sleeping den, 2 bathroom, 2 toilets, living room < 9m², separate kitchen, dining area, tv den

- **Sleeps - bed(s) :**

2 full bed(s), 2 bunk beds, 2 sleeper sofa(s)
1 pers

- **Guest facilities :**

T.V., hi-fi system, DVD player, cable/satelite, internet access, high speed internet access, wifi, wardrobe, cupboard, Hanging wardrobe, heated towel rail, central heating, Drapes, entry phone system

- **Appliances :**

Crockery/flatware, kitchen utensils, cafetiere, electric coffee maker, electric espresso coffee maker, electric kettle, toaster, electric stove, electric hobs, micro-wave oven, extractor hood, refridgerator, deep freeze, dish washer, washing machine, clothes dryer, vacuum cleaner

Exterior

- **Ground surface :**

1000m²

- **Outside accommodation :**

Covered terrace 15m², balcony 17m², sundeck 17m²

- **Outside setting :**

Yard, landscaped yard 100m², creek

- **Outside amenities :**

BBQ, yard table(s), 7 yard seat(s), parasol, 7 sun recliner(s)



large bedroom

Services

- **washing :**

Sheets (1 X / per week), Towels (1 X / per week), Linen (1 X / per week), Comforter(s) (1 X / per week), Comforter(s) (1 X / per week), Pillows (1 X / per week)

- **Single family home :**

Cleaning on departure supplement (+C\$107*), Snow clearance, Parking

- **Personnel :**

Laundry supplement (+C\$8*), Massage supplement (+C\$38*)

For your guidance

- **For your guidance**

Kids welcome

No pet allowed

Non smoking rental, cell phone network coverage, personal transport advisable

Water : hot/cold

Local voltage supply : 220-240V / 50Hz

Electricity supply : mains



living room

Photo album - 1



Winter



Summer



separate kitchen



living room



large bedroom

Photo album - 2



bunk beds

bathroom

bathroom



dining area

view from the living room

bedroom



bunk beds

Guest facilities and furnishings

Interior facilities

Photo album - 3



bathroom

bathroom

bathroom



Hanging wardrobe

the decor

horse-drawn carriage



sauna

ski slopes


mountain pursuits nearby

Route map



Location & Access

" Tiefenbach, 2 km above the town centre Aschau im Zillertal, with breathtaking views of the valley and the Zillertal's alpine world. Only 6 km away from the ski arenas Zell and Kaltenbach/Hochfügen. There is a possibility of access along the mountain road. Snow chains may be required. "

 GPS coordinates in degrees, minutes, seconds: Latitude 47° 15'50"N - Longitude 11°52'52"E ([Dwelling](#))

Address

→ Tiefenbach 330
6274 Aschau im Zillertal

• **Freeway (exit) Wiesing / Zillertal**

→ Wiesing, Tyrol, Austria
→ Distance : 25km
→ Time : 20'

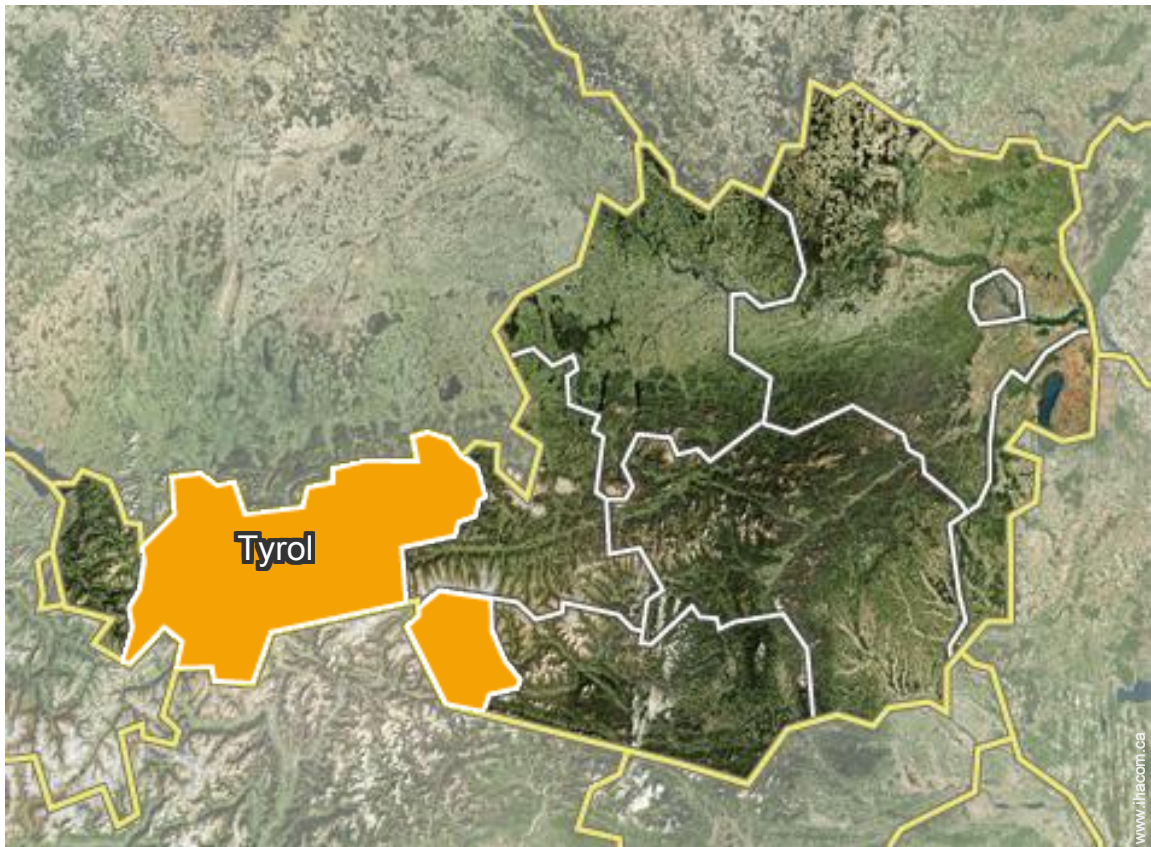
- Mayrhofen : (10km)
- Innsbruck : (55km)
- Kufstein : (60km)

Contact

Spoken languages



Location



Vacation rental
 Aschau im Zillertal - Austria
"Landhaus Rieder Apart Arenablick"

[Book now](#)

Availability calendar - from : november 2018

Nov	Th	F	Sa	Su	M	Tu	W	Th	F	Sa	Su	M	Tu	W	Th	F	Sa	Su	M	Tu	W	Th	F	Sa	Su	M	Tu	W	Th	F
2018	1	2	3	4	5	6	7	8	9	10	11	12	13	14	15	16	17	18	19	20	21	22	23	24	25	26	27	28	29	30
													-	-	-	-	-	-	-	-	-	-	-	-	-	-	-	-	-	-

Dec	Sa	Su	M	Tu	W	Th	F	Sa	Su	M	Tu	W	Th	F	Sa	Su	M	Tu	W	Th	F	Sa	Su	M	Tu	W	Th	F	Sa	Su	M
2018	1	2	3	4	5	6	7	8	9	10	11	12	13	14	15	16	17	18	19	20	21	22	23	24	25	26	27	28	29	30	31
	-	-	-	-	-	-	-	-	-	-	-	-	-	-	-	-	-	-	-	-	-	-	-	-	-	-	-	-	-	-	-

Jan	Tu	W	Th	F	Sa	Su	M	Tu	W	Th	F	Sa	Su	M	Tu	W	Th	F	Sa	Su	M	Tu	W	Th	F	Sa	Su	M	Tu	W	Th
2019	1	2	3	4	5	6	7	8	9	10	11	12	13	14	15	16	17	18	19	20	21	22	23	24	25	26	27	28	29	30	31
	-	-	-	-	-	-	-	-	-	-	-	-	-	-	-	-	-	-	-	-	-	-	-	-	-	-	-	-	-	-	-

Feb	F	Sa	Su	M	Tu	W	Th	F	Sa	Su	M	Tu	W	Th	F	Sa	Su	M	Tu	W	Th							
2019	1	2	3	4	5	6	7	8	9	10	11	12	13	14	15	16	17	18	19	20	21	22	23	24	25	26	27	28
	-	-	-	-	-	-	-	-	-	-	-	-	-	-	-	-	-	-	-	-	-	-	-	-	-	-	-	-

Mar	F	Sa	Su	M	Tu	W	Th	F	Sa	Su	M	Tu	W	Th	F	Sa	Su	M	Tu	W	Th	F	Sa	Su	M	Tu	W	Th	F	Sa	Su
2019	1	2	3	4	5	6	7	8	9	10	11	12	13	14	15	16	17	18	19	20	21	22	23	24	25	26	27	28	29	30	31
	-	-	-	-	-	-	-	-	-	-	-	-	-	-	-	-	-	-	-	-	-	-	-	-	-	-	-	-	-	-	-

Apr	M	Tu	W	Th	F	Sa	Su	M	Tu	W	Th	F	Sa	Su	M	Tu	W	Th	F	Sa	Su	M	Tu	W	Th	F	Sa	Su	M	Tu
2019	1	2	3	4	5	6	7	8	9	10	11	12	13	14	15	16	17	18	19	20	21	22	23	24	25	26	27	28	29	30
	-	-	-	-	-	-	-	-	-	-	-	-	-	-	-	-	-	-	-	-	-	-	-	-	-	-	-	-	-	-

May	W	Th	F	Sa	Su	M	Tu	W	Th	F	Sa	Su	M	Tu	W	Th	F	Sa	Su	M	Tu	W	Th	F	Sa	Su	M	Tu	W	Th	F
2019	1	2	3	4	5	6	7	8	9	10	11	12	13	14	15	16	17	18	19	20	21	22	23	24	25	26	27	28	29	30	31
	-	-	-	-	-	-	-	-	-	-	-	-	-	-	-	-	-	-	-	-	-	-	-	-	-	-	-	-	-	-	

June	Sa	Su	M	Tu	W	Th	F	Sa	Su	M	Tu	W	Th	F	Sa	Su	M	Tu	W	Th	F	Sa	Su							
2019	1	2	3	4	5	6	7	8	9	10	11	12	13	14	15	16	17	18	19	20	21	22	23	24	25	26	27	28	29	30
	-	-	-	-	-	-	-	-	-	-	-	-	-	-	-	-	-	-	-	-	-	-	-	-	-	-	-	-	-	

Jul	M	Tu	W	Th	F	Sa	Su	M	Tu	W	Th	F	Sa	Su	M	Tu	W	Th	F	Sa	Su	M	Tu	W	Th	F	Sa	Su	M	Tu	W
2019	1	2	3	4	5	6	7	8	9	10	11	12	13	14	15	16	17	18	19	20	21	22	23	24	25	26	27	28	29	30	31
	-	-	-	-	-	-	-	-	-	-	-	-	-	-	-	-	-	-	-	-	-	-	-	-	-	-	-	-	-	-	

Aug	Th	F	Sa	Su	M	Tu	W	Th	F	Sa	Su	M	Tu	W	Th	F	Sa	Su	M	Tu	W	Th	F	Sa							
2019	1	2	3	4	5	6	7	8	9	10	11	12	13	14	15	16	17	18	19	20	21	22	23	24	25	26	27	28	29	30	31
	-	-	-	-	-	-	-	-	-	-	-	-	-	-	-	-	-	-	-	-	-	-	-	-	-	-	-	-	-	-	



Vacation rental
Aschau im Zillertal - Austria
"Landhaus Rieder Apart Arenablick"

10
[Book now](#)



Availability calendar - from : august 2019

Sep	Su	M	Tu	W	Th	F	Sa	Su	M	Tu	W	Th	F	Sa	Su	M	Tu	W	Th	F	Sa	Su	M							
2019	1	2	3	4	5	6	7	8	9	10	11	12	13	14	15	16	17	18	19	20	21	22	23	24	25	26	27	28	29	30
-	-	-	-	-	-	-	-	-	-	-	-	-	-	-	-	-	-	-	-	-	-	-	-	-	-	-	-	-	-	

Oct	Tu	W	Th	F	Sa	Su	M	Tu	W	Th	F	Sa	Su	M	Tu	W	Th	F	Sa	Su	M	Tu	W	Th							
2019	1	2	3	4	5	6	7	8	9	10	11	12	13	14	15	16	17	18	19	20	21	22	23	24	25	26	27	28	29	30	31
-	-	-	-	-	-	-	-	-	-	-	-	-	-	-	-	-	-	-	-	-	-	-	-	-	-	-	-	-	-		

[Month : Next >>](#)

Rental rates - Country House - from 2 to 6 Person(s)

Rates	Night	Weekend	week	2 weeks	Month
 Low season	C\$75* ↓ > 3	-	-	-	-
 High season	C\$151* ↓ > 7	-	-	-	-

↓ Reducing rates > Minimum Night

[Book now](#)

Booking conditions

• **Reservation**

→ Payment made upon reservation :
30% of rental sum
→ Payment balance :
on handing over the keys

• **rentals**

→ Day tax in addition
→ Cleaning charge levy on departure :
C\$91*
→ Anticipated supplement for :
- supplementary bed(s)

Accepted methods of payment

• Visa/Delta/Electron • Switch/Maestro •
Bank transfer (wire) • MasterCard/
EuroCard • American Express • Diners
Club • PayPal • Cash

[▶ Book now](#)

[▶ Contact the owner](#)

Contact directly the property owners

www.ihacom.ca
Advert No.
11703
>> Book now <<

Contact

Spoken
languages



* Converted at the rate indicated : €100 = \$116.85 = £89 = C\$152.14

Advert No. 11703

www.ihacom.ca



[>> VACATION HOMES](#)

DIRECT BY OWNERS